

Auth-Chimes

**5935 Corporate Drive
Manhattan, KS 66503
(800) 275-1747 • Fax (800) 275-5081**

www.florencemailboxes.com

Installation Instructions Non-Electric Chime

Catalog No. 68710x-01 is designed for mounting on doors, or walls 3/8" to 4-3/4" thick.

Catalog Nos. 68410x-01, 68610x-01 and 68410x-01 are designed for mounting on doors, or walls 3/8" to 2" thick.

Fire-rated viewers (UL) are available for Catalog Nos. 68510x-01xx, No. 68610x-01xx and 690-1xx. Replace last 2 xx with UL to order.

Material Enclosed for all units

- Chime Base and Cover
- Faceplate
- Actuating Shaft with Push button
- six (6) #6 x 3/8" Mounting Screws

Additional materials needed for 68510x-01xx & 68910x-01

- Three (3) 10-32 x 2-1/4" studs
- Three (3) 10-32 nuts

Additional materials needed for all except 68510x-01xx

- Blank name card(s)

Important

- Read instructions thoroughly before proceeding with installation
- Trim proper paper template. (per Cat. No.)
- Follow instructions carefully.

1

Instructions for:
Catalog No. 68410x-01
Catalog No. 68610x-01xx

Step No. 1 (From outside of door)

• Place template on the **outside** of the door, locating hole "C" or "D" approximately 58" from the finished floor.

Be sure template is parallel to edge of door.

- Pilot drill holes "A" and "C" or "D" on the template using 3/32" diameter drill.
- Drill 2 hole "B"s with a 3/32" diameter drill, approximately 1/4" deep.
- Remove template.
- Drill holes "A" and "C" or "D" through door with 3/32" diameter drill.
- Drill hole "A" through - 3/8" diameter drill.
- For Non UL Viewers: drill hole "D" through - 13/16" diameter drill.
- For Optional UL Viewers (68610x-01UL only): drill hole "C" through - 9/16" diameter drill.

Step No. 2 (From inside of door)

- Remove cover from chime base. (see page 9)
- Place chime base (mechanism down) on inside of door. Align raised guide on flat side of chime base into previously drilled 3/8" diameter hole "A" (see Fig. A).

Be sure base is parallel to edge of door.

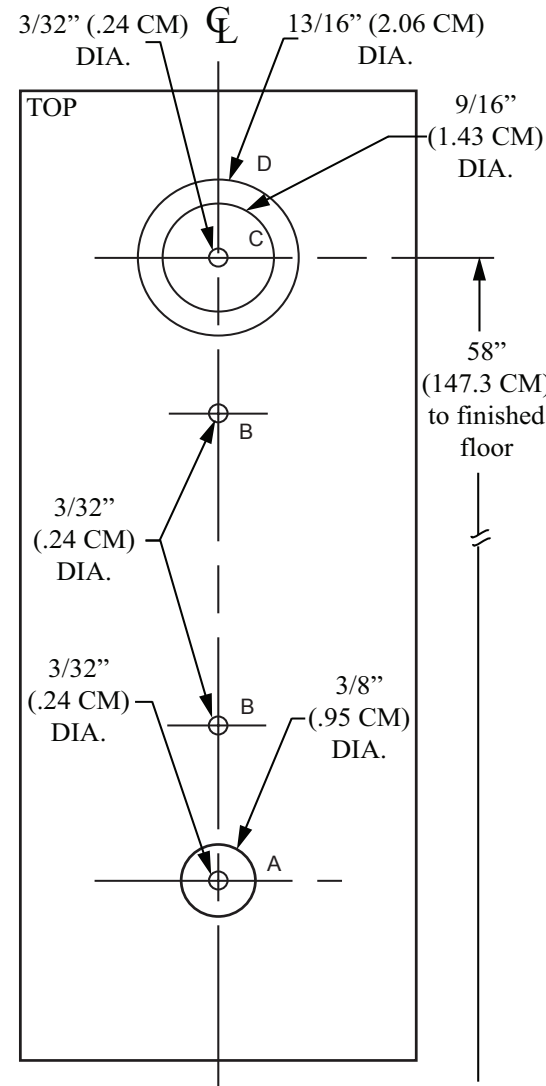
- Drill 3 holes (#1,#2 & #3 - see Fig. D) through base with a 3/32" diameter drill, approximately 1/4" deep.
- Mount Chime Base using 3 #6 x 3/8" screws provided.

Step No. 3 (see Fig. A, Fig. B, Fig. C and Fig. D)

- Pull hinge pin downward (to just below slot in hinged lever) to enable actuating shaft to pass through hinged lever.
- From outside of door, insert actuating shaft with button through 3/8" diameter hole and hinged lever.
- Place face plate over push button and mount using 2 #6 x 3/8" screws provided.
- From inside of door, push the actuating shaft outward, so that the button projects as far as possible through faceplate. While holding the shaft in this position, press upward on hinge pin, rotating pin away from the base so that the end of the pin engages into nearest hole on the shaft. Push hinge pin upward to limit stop.

For steps No. 4 and 5 - See page 9

2



Front of Door Template for:
Catalog No. 68410x-01 & No. 68610x-01xx

3

Instructions for:
Catalog No. 68710x-01
Catalog No. 690-1xx

Step No. 1 (From outside of door)

- For 68710x-01 place template on the **outside** of the door, locating hole "A" approximately 55" to 60" from the finished floor.
- For 690-1xx place template on the **outside** of the door, locating hole "C" approximately 57" from the finished floor.

Be sure template is parallel to edge of door.

- Pilot drill holes "A" or "A" and "C" on the template using a 3/32" diameter drill.
- For 68710x-01 drill one "B" hole - 3/32" diameter drill, approximately 1/4" deep.
- Remove template.
- Drill holes "A" or "A" & "C" through door with 3/32" diameter drill.
- Drill holes "A" or "A" & "C" through door with 3/32" diameter drill.
- For 690-1xx only (with or without UL Viewer) drill hole "C" through - 9/16" diameter drill.

Step No. 2 (From inside of door)

- Remove cover from chime base. (see page 9)
- Place chime base (mechanism up) on inside of door (or wall). Align raised guide on flat side of chime base into previously drilled 3/8" diameter hole "A" (see Fig. A).

Be sure base is parallel to edge of door.

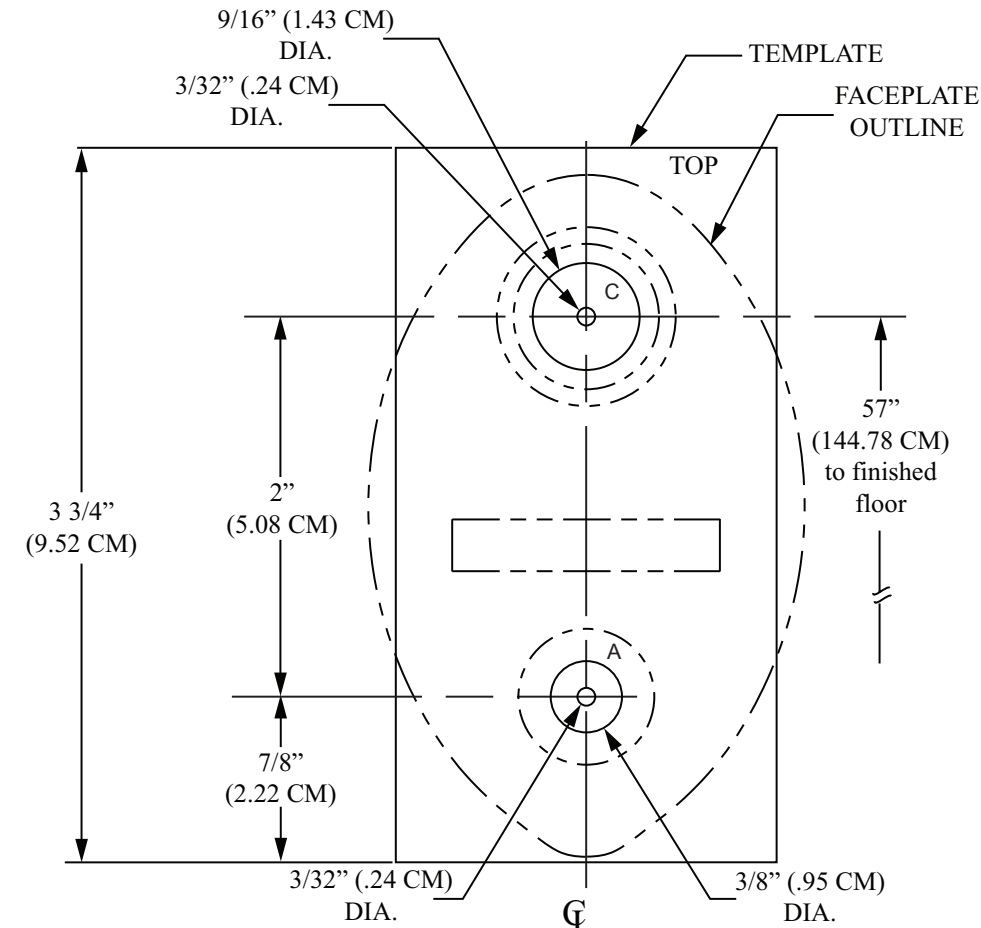
- Drill 3 holes (#1,#2 and #3, see Fig. D.) through base with a 3/32" diameter drill, approximately 1/4" deep.
- Mount chime base using 3 #6 x 3/8" screws provided.

Step No. 3 (see Fig. A, Fig. B, Fig. C and Fig. D)

- Pull hinge pin downward (to just below slot in hinged lever) to enable actuating shaft to pass through hinged lever.
- From outside of door, insert actuating shaft with button through 3/8" diameter hole and hinged lever.
- Place face plate over push button.
- For 68710x-01 mount using 1 #6 x 3/8" screws provided. 690-1xx will be held on with viewer.
- From inside of door, push the actuating shaft outward, so that the button projects as far as possible through faceplate. While holding the shaft in this position, press upward on hinge pin, rotating pin away from the base so that the end of the pin engages into nearest hole on the shaft. Push hinge pin upward to limit stop.

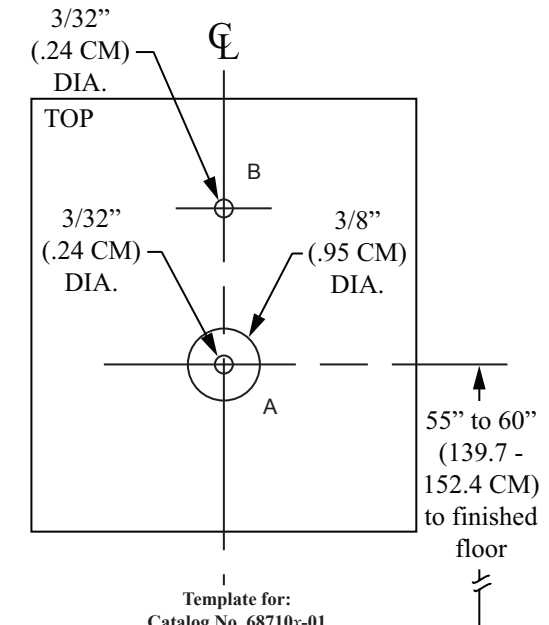
For steps No. 4 and 5 - See page 9

4



Front of Door Template for:
Catalog No. 690-1xx

5



Template for:
Catalog No. 68710x-01

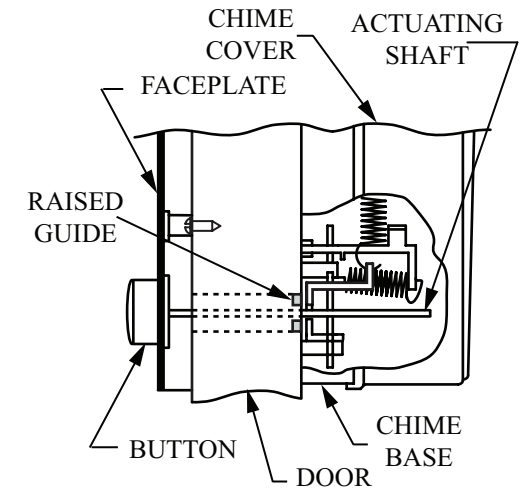


Fig A

7

Step No. 1

- Place template on **outside** of door locating hole "B" approximately 58" from finished floor.

Be sure template is parallel to edge of door.

- Pilot drill 5 holes on template using 3/32" drill.
- Remove template
- Drill 4 holes "A" - 3/8" diameter.
- Drill hole "B" - 1-1/2" diameter.

Step No. 2

- Tighten 3 threaded rods into tapped holes at rear of faceplate (not pictured).
- Remove cover from chime base (see page 9).
- Pull hinge pin downward (to limit stop) to enable actuating shaft to pass through hinged lever (see Fig. A).

Step No. 3 (see Fig. A, Fig. B, Fig. C and Fig. D)

- From outside of door, insert actuating shaft with button through previously drilled 3/8" diameter hole "A" (second from bottom).
- Place faceplate over push button allowing 3 threaded rods to pass through holes in door.
- From inside of door, mount chime base (mechanism down). Chime base holes (#1, #2, #3) will align with 3 threaded rods, actuating shaft will pass through hinged lever. Start 3 hex nuts provided onto the threaded rods and tighten.
- From inside of door, push the actuating shaft outward, so that the button projects as far as possible through faceplate. While holding the shaft in this position, press upward on hinge pin, rotating pin away from the base so that the end of the pin engages into nearest hole on the shaft. Push hinge pin upward to limit stop.

For steps No. 4 and 5 - See page 9

Chime installation is now completed. Press and release push button. Both tones should sound satisfactorily.

Step No. 4

- Adjustment** - If adjustment is required, the hinged lever must be bent as shown in Fig. D. Use the tip of a screwdriver to bend Prong "A" or "B" forward or backward as required.

Step No. 5

- Break off excess of actuating shaft at score line closest to hinge pin.
- Attach cover to chime base (see below).

To Remove Cover

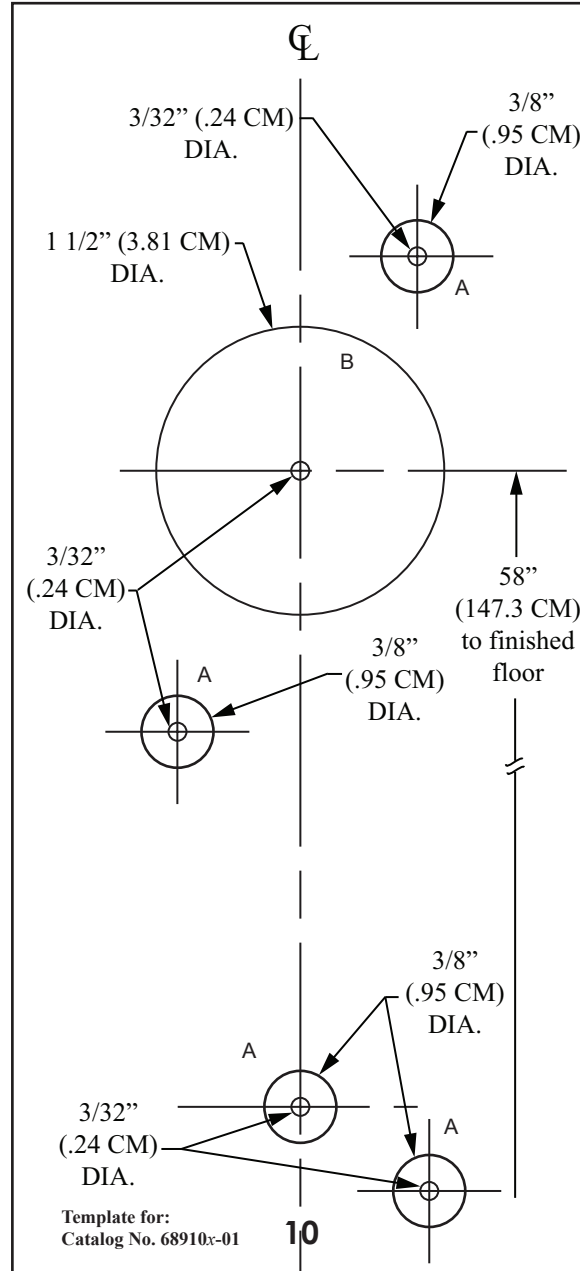
- Hold chime base (cover-slotted end up) with finger through large hole
- Grasp lower end of cover with other hand, pull downward and tilt lower end away from base.

To Attach Cover

- Place cover over chime base
- Engage long tab into open slot.
- Tilt cover towards base until short tab engages into blind slot.

To Reverse Cover Slide Direction

- Remove cover (see above).
- Remove rubber bumper from inside of cover and move the bumper to the mounting base on the opposite end.
- Remove spring and reinstall it on the mounting pegs opposite those on which it was originally mounted.
- Replace cover (see above).



Template for:
Catalog No. 68910x-01

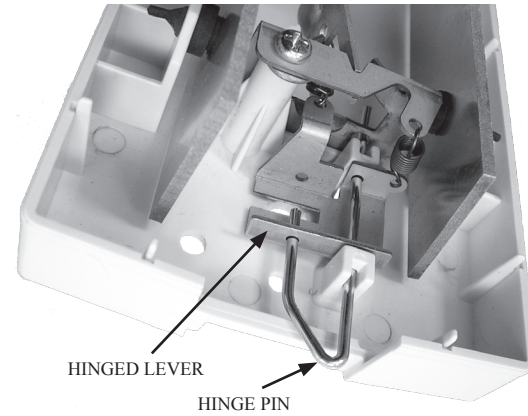


Fig. B

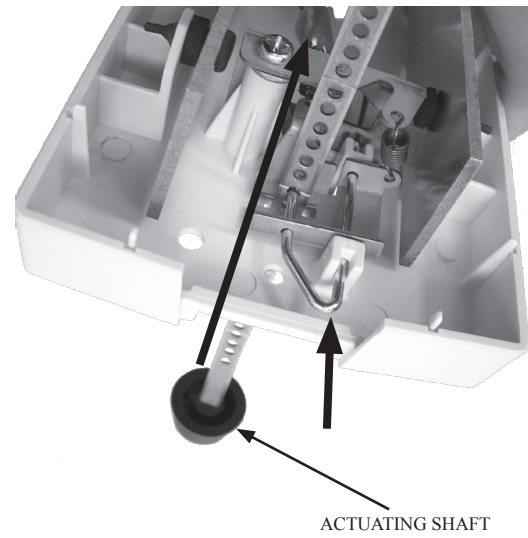


Fig. C

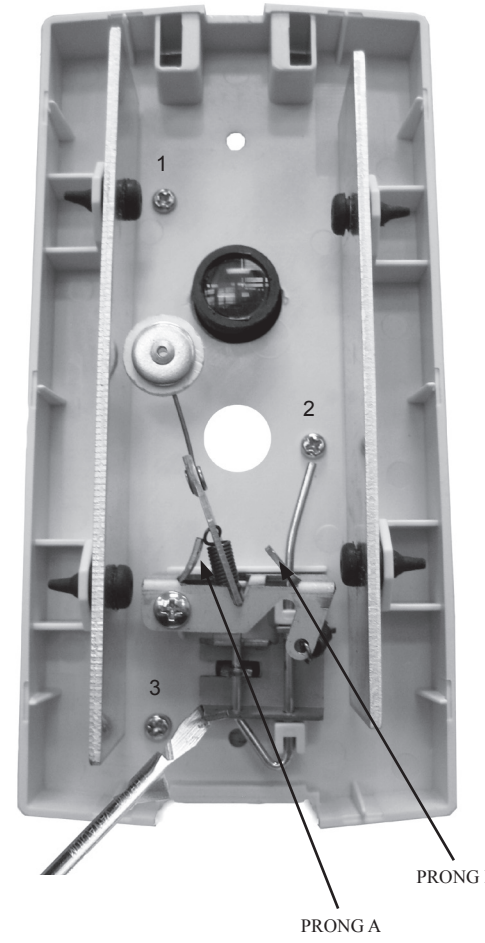
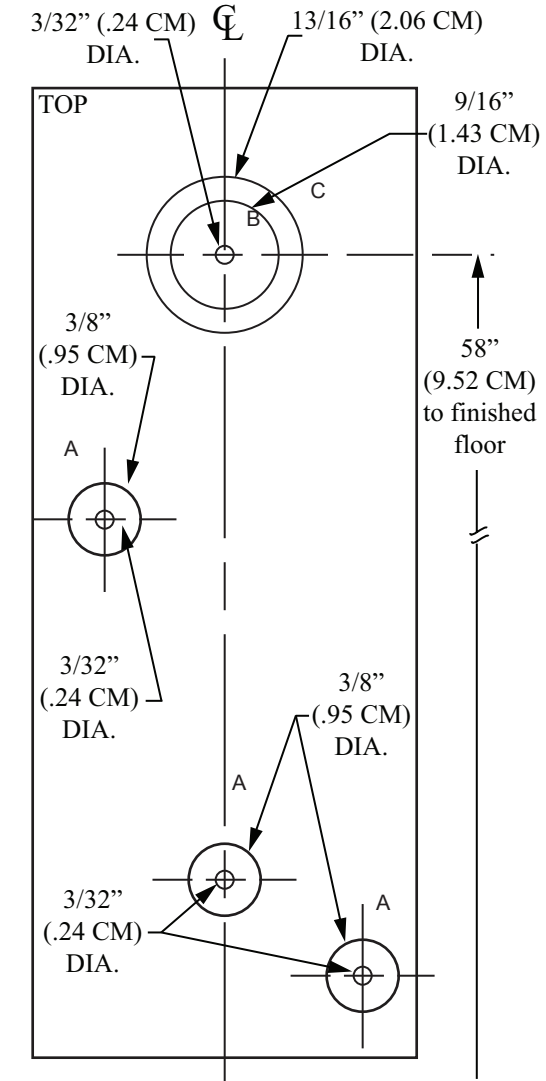


Fig. D



Template for:
Catalog No. 68510x-01xx

Step No. 1

- Place template on **outside** of door locating hole "B" approximately 58" from finished floor.

Make sure template is parallel to edge of door.

- Pilot drill all 4 holes on template using 3/32" drill.
- Remove template
- Drill holes "A" and "B" or "C" through door - 3/32" drill.
- Drill 3 holes "A" - 3/8" diameter.
- For non UL Viewers drill hole "C" - 13/16" diameter.
- For UL Viewers drill hole "B" - 9/16" diameter.

Step No. 2

- Tighten 2 threaded rods into tapped holes at rear of faceplate (not pictured).
- Remove cover from chime base (see page 9).
- Pull hinge pin downward (to limit stop) to enable actuating shaft to pass through hinged lever.

Step No. 3 (see Fig. A, Fig. B, Fig. C and Fig. D)

- From outside of door, insert actuating shaft with button through previously drilled 3/8" diameter hole "A" (second from bottom).
- Place faceplate over push button allowing 2 threaded rods to pass through holes in door.
- From inside of door, mount chime base (mechanism down). Chime base holes (fig. D #2 & #3) will align with 2 threaded rods, actuating shaft will pass through hinged lever. Start 3 hex nuts provided onto the threaded rods and tighten.
- From inside of door, push the actuating shaft outward, so that the button projects as far as possible through faceplate. While holding the shaft in this position, press upward on hinge pin, rotating pin away from the base so that the end of the pin engages into nearest hole on the shaft. Push hinge pin upward to limit stop.

For Steps No. 4 and 5 - See page 9