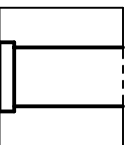
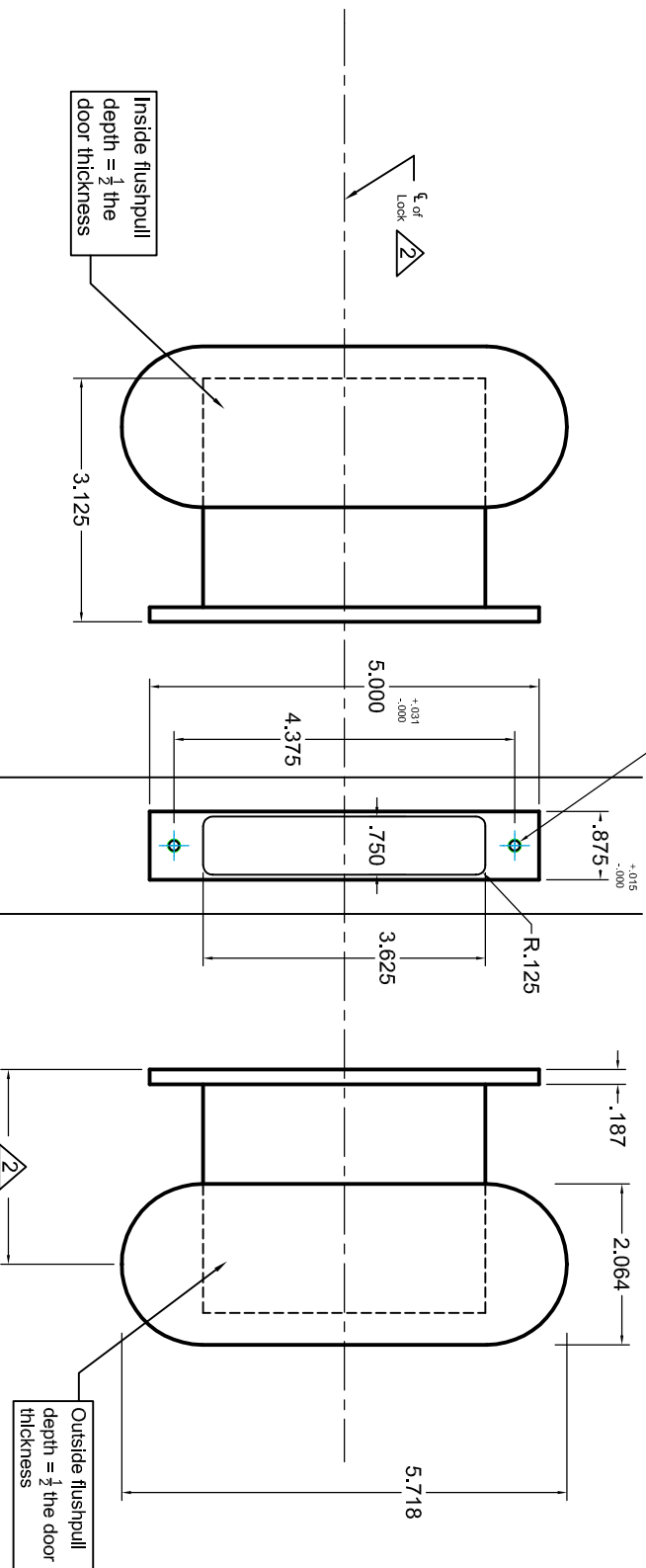


**INSIDE
OF DOOR**



2-places

**OUTSIDE
OF DOOR**



Notes:

- ▲ Prep for #8 wood or 8-32 machine screws.
- ▲ Horizontal and vertical spacing of the flush pulls is up to the end user. However, we do suggest to line up the backset with the other locks on your project, i.e. 2", 2 1/2", 2 3/4", 2 3/4", 3 1/4", 5" and 6"

Additional Notes:

- a) **Responsibility:** Door and frame manufacturers are responsible for providing adequate construction or re-inforcement for proper installation of hardware shown.
- b) See catalog / spec sheets for additional lock details

Accurate

Lock and Hardware

Standard 2000 - A2002B, O2002B, N2002B
or CA2002B, CO2002B, CN2002B flush pulls
Template

Temp#

T-ALH.2000.A

Rev.